

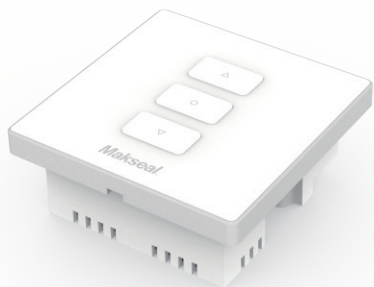
Makseal™

迈克希尔



MR1D

墙壁控制器说明书



※请在使用和安装此产品前仔细阅读本说明书，并请按照产品说明书要求操作。

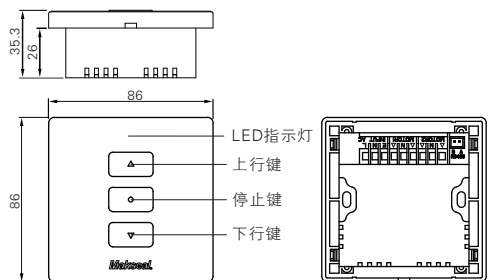
产品特点

- 时尚镜面面板；
- 经典镜面式机械按键；
- 标准86尺寸设计；
- 带有过载短路保护，4分钟自动延时保护功能；

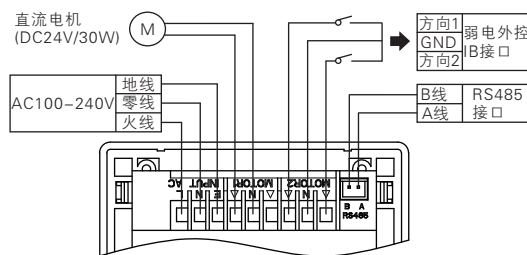
技术参数

输入电压	AC100~240V 50/60HZ
输出	DC24V/30W
待机功率	< 1W
遥控距离	≥30M
无线频率	ASK433.92MHz
工作温度	0℃~60℃

结构尺寸示意图

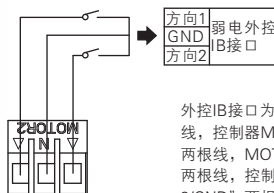


接线图



MR1D接线图

弱电控制



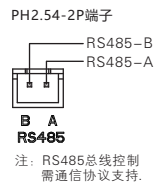
外控B接口为12B控制方式：短接一下“方向1/GND”两根线，控制器MOTOR的一端输出，再次短接“方向1/GND”两根线，MOTOR两端停止输出；短接一下“方向2/GND”两根线，控制器MOTOR另一端有输出，再次短接“方向2/GND”两根线，MOTOR两端停止输出；如果短接了“方向1/GND”（或“方向2/GND”）两根线，MOTOR的一端正在输出，当短接“方向2/GND”（或“方向1/GND”）两根线时，则MOTOR转换为另一端输出。

RS485控制

PH2.54-2P端子的A/B号线分别为RS485A、RS485B；RS485主机与控制器接好线并对好码后，主机发送“打开”“关闭”“停止”等指令，控制器应马上执行相应动作，并将状态数据返回给主机。

主机发送查询窗帘位置指令，控制器接收到后返回当前位置给主机。

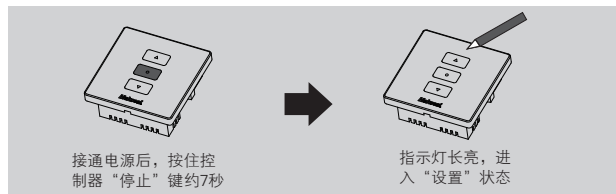
支持“群控”、“查询窗帘运行状态”指令。（主机发送除“群控”指令外的任意功能指令，控制器在接收到指令后20ms内返回指令给主机确认收到指令。）



控制器设置

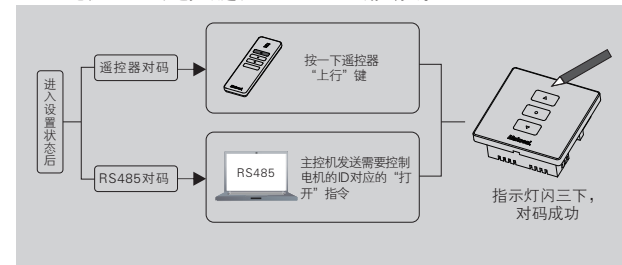
- 进入“设置”状态

注：控制器在没有任何操作时，15秒后自动退出“设置”状态。



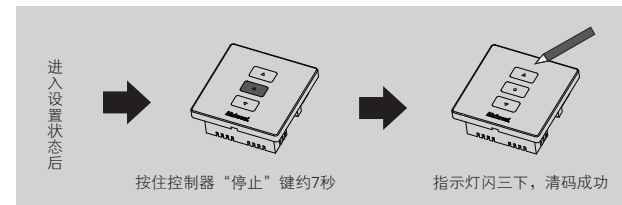
- 对码

注：电机可对16个遥控频道、16组RS485总线控制码。



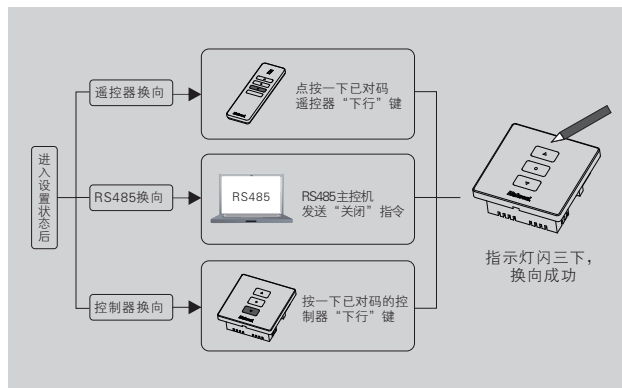
- 清码

注：执行此操作后，所有遥控器码、RS485码均被清除



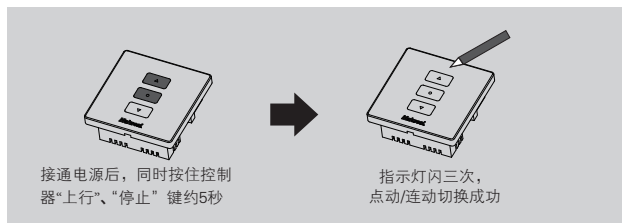
- 换向

注：若按遥控器上行键、控制器上行键或RS485总线发送“打开”指令，没有对应窗帘的实际开方向则需要换向，换向后遥控器、控制器、RS485 主机控制的功能将对调。



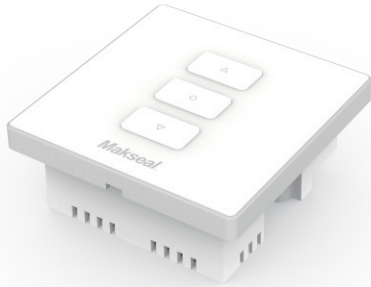
- 点动/连动切换功能

注：在点动模式下用遥控器、控制器、B接口控制，相应的输出端会输出，如果键按下没有超过1.5秒，则会停止输出。如果按下去超过1.5秒，松开键将连续输出。



MR1D

Instructions for wall controllers



※Before installation please read this instruction carefully.

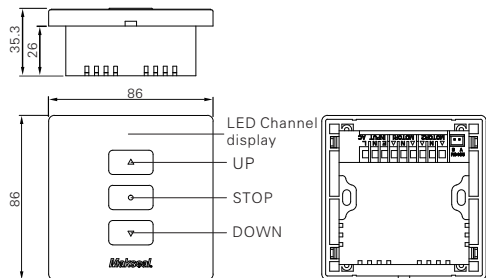
Function

- Fashionable gloss bright panel
- Standard 86x86 size;
- Over-load protection, 4-minute time-delay protection;
- Classic gloss push button;

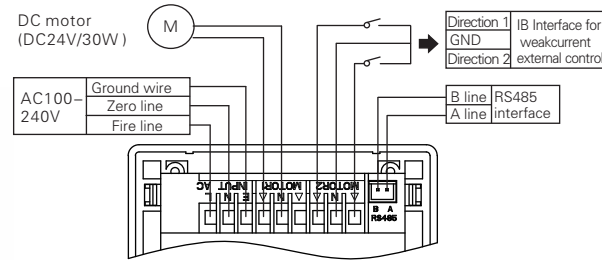
Specifications

Input voltage	AC100-240V 50/60HZ
Output	DC24V/30W
Standby power	< 1W
Remote control distance	≥ 30M
Wireless frequency	ASK433.92MHz
Durable Temperature	0°C ~ 60°C

Structural Dimension Diagram

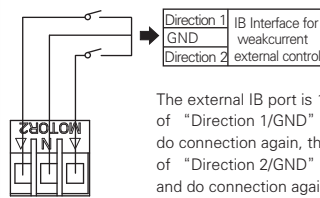


Wiring diagram



MR1D wiring diagram

Weak electrical control



The external IB port is 12B controlling mode. Connect wires of "Direction 1/GND", the output of Motor is activated, and do connection again, the output is inactivated; Connect wires of "Direction 2/GND", another output of Motor is activated, and do connection again, the output is inactivated; If connection of "Direction 2/GND" (or "Direction 1/GND") is done following the connection of "Direction 1/GND" (or "Direction 2/GND"), the output is changed to the latest connection while the other one is inactivated.

RS485 Controlling

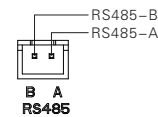
The A/B wires in the terminal of the PH2.54-2P are corresponding to Rs485A and Rs485B respectively.

After the code programming of Rs485 controlling client and the controller is done, the controlling client sends "OPEN", "CLOSE" and "STOP" commands or etc to the controller, the controller will action and feedback the corresponding data to the controlling client.

The client sends position enquiring command, the motor receive and feedback the position to the client.

Support commands like "Group-Controlling", "Position Enquiring". The controlling client sends command except "Group-controlling" to the controller, the controller will confirm and feedback within 20ms.

PH2.54-2P端子

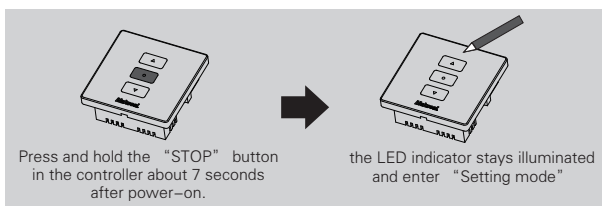


Attention: The Rs485 program should be compiled with both motor and client.

Controller Settings

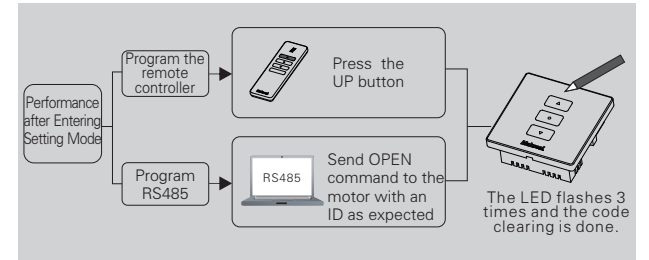
● Enter Setting mode.

Attention, if no action within 15-seconds, the motor exits setting mode automatically.



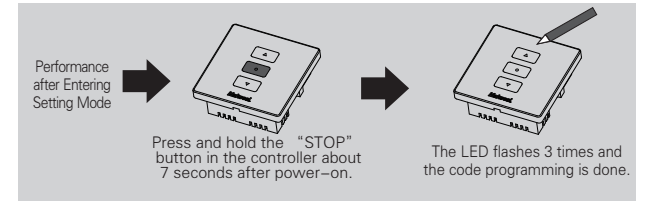
● Program Code

Attention: 16 channels in the remote, and 16 pairs RS485 BUS Controlling code.



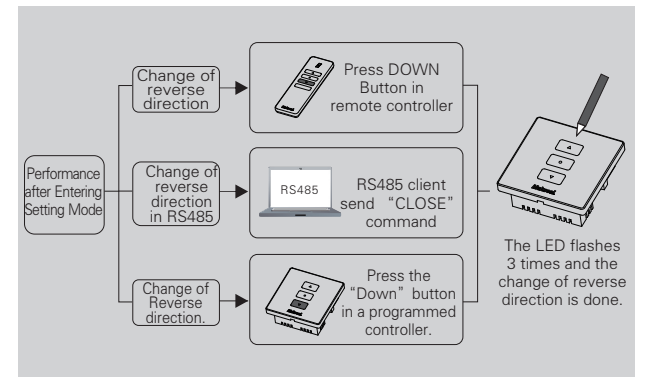
● Clear Code

Attention: All codes recording remote controller, Rs485 are erased after this performance.



● Change of Reverse direction.

Attention: The command "OPEN" is sent (from Remote UP button, controller or Rs485), the curtain doesn't move the "OPEN" direction but run opposite, Change of Reverse direction performance is necessary. And after that performance, a same direction in the remote controller, controller and Rs485 is changed.



● Change of Dot-move and normal Move.

Attention: under mode of dot-move, if the duration of time to press and hold the button lasts less than 1.5 seconds, the output will inactive after you release the button, on the contrary, the output is active all the time.

